

LSE Data Library

Luis Martinez

Summary

- Introduction
- Collection
- Locating and accessing the data
- Other data support activities
- Selection and strategic responsibilities, Data Advisory Group, DAG

Introduction

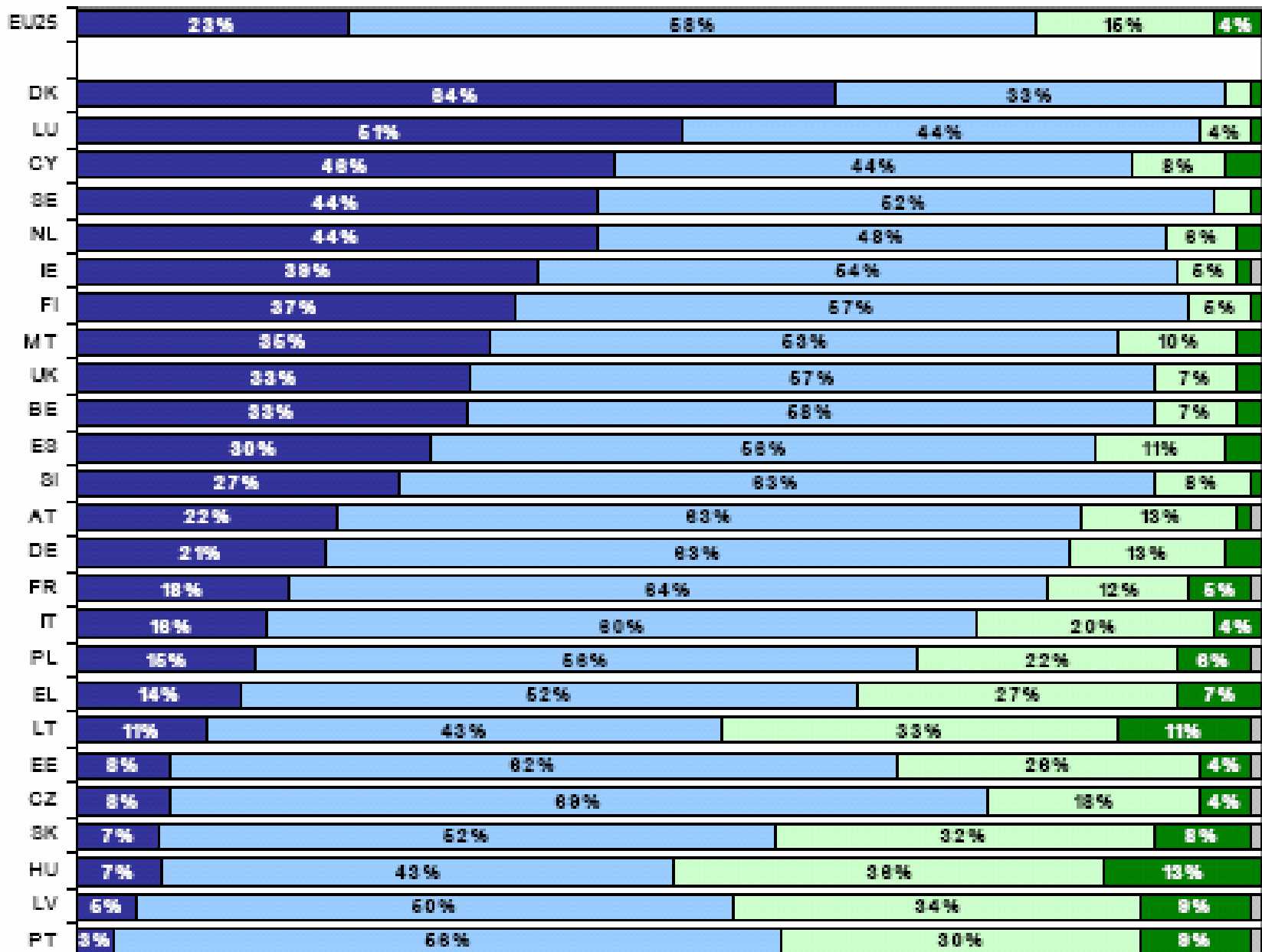
- Advisory service for postgraduate students and staff
 - Provide access
 - Identify existing data
 - Locate external resources
 - Troubleshoot
 - Teaching

Collection

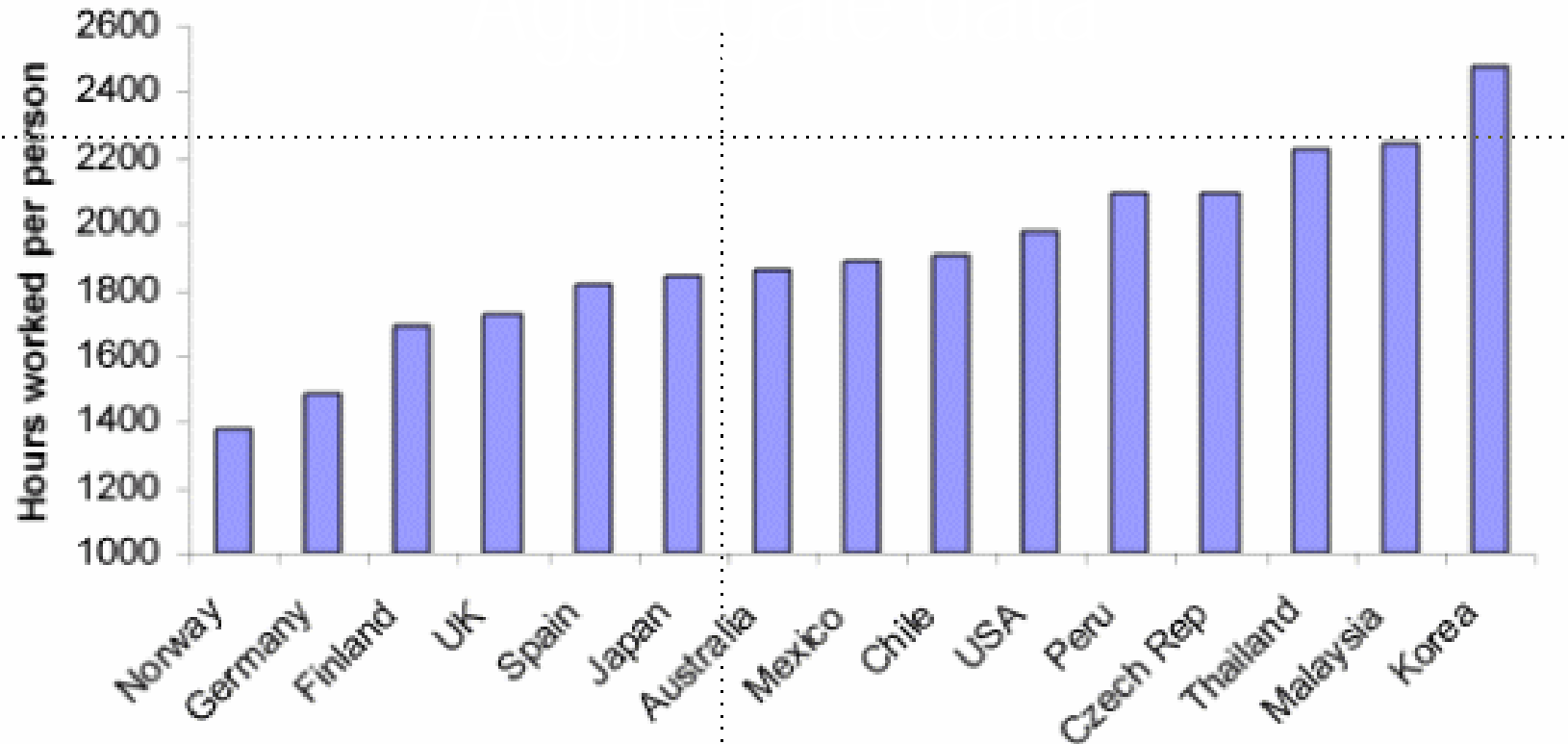
- Different types of data :
 - Microdata
 - Aggregated data
 - Geographic Information Systems, GIS
 - Financial databases

On the whole, are you ... with the life you lead?

Very satisfied Fairly satisfied Not very satisfied Not at all satisfied DK



Average Annual Hours Worked



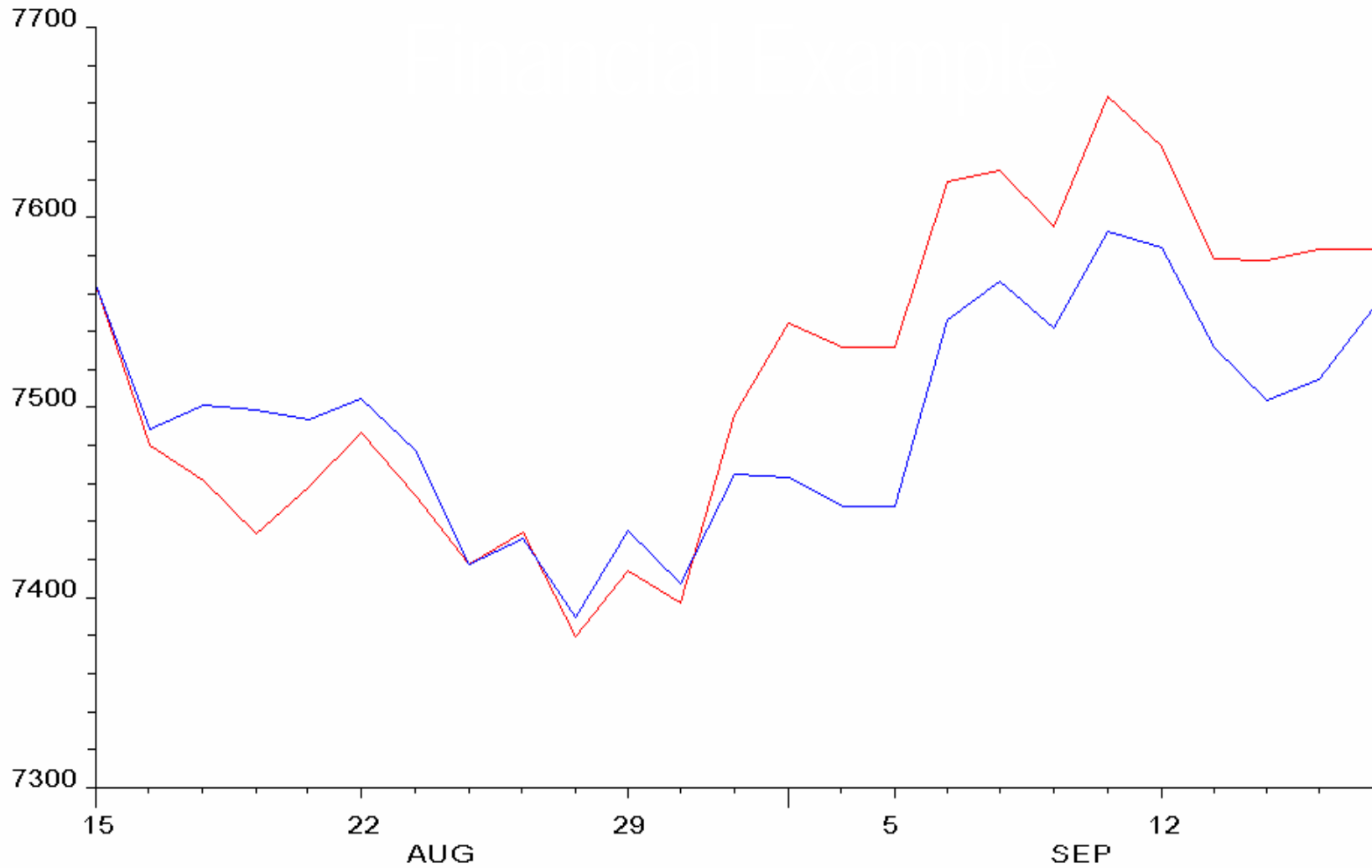
Source: ILO Key Indicators



19th September 2005

Data Library for Economic Researchers

16/9/05



— NYSE COMPOSITE - PRICE INDEX
— S&P 100 - PRICE INDEX

Source: DATASTREAM

19th September 2005

Data Library for Economic Researchers

Locating and Accessing the data

- [LSE eLibrary](#)
 - Organised by type of data
 - Organised by subject
- Different access conditions

Other data support activities

- Information Literacy Courses
- Data Surgeries
- Mailing list
- News

Data Advisory Group, DAG

- Formed by 11 members representing different departments in the School
- Selection
- Strategic responsibilities

19th September 2005

Data Library for Economic Researchers